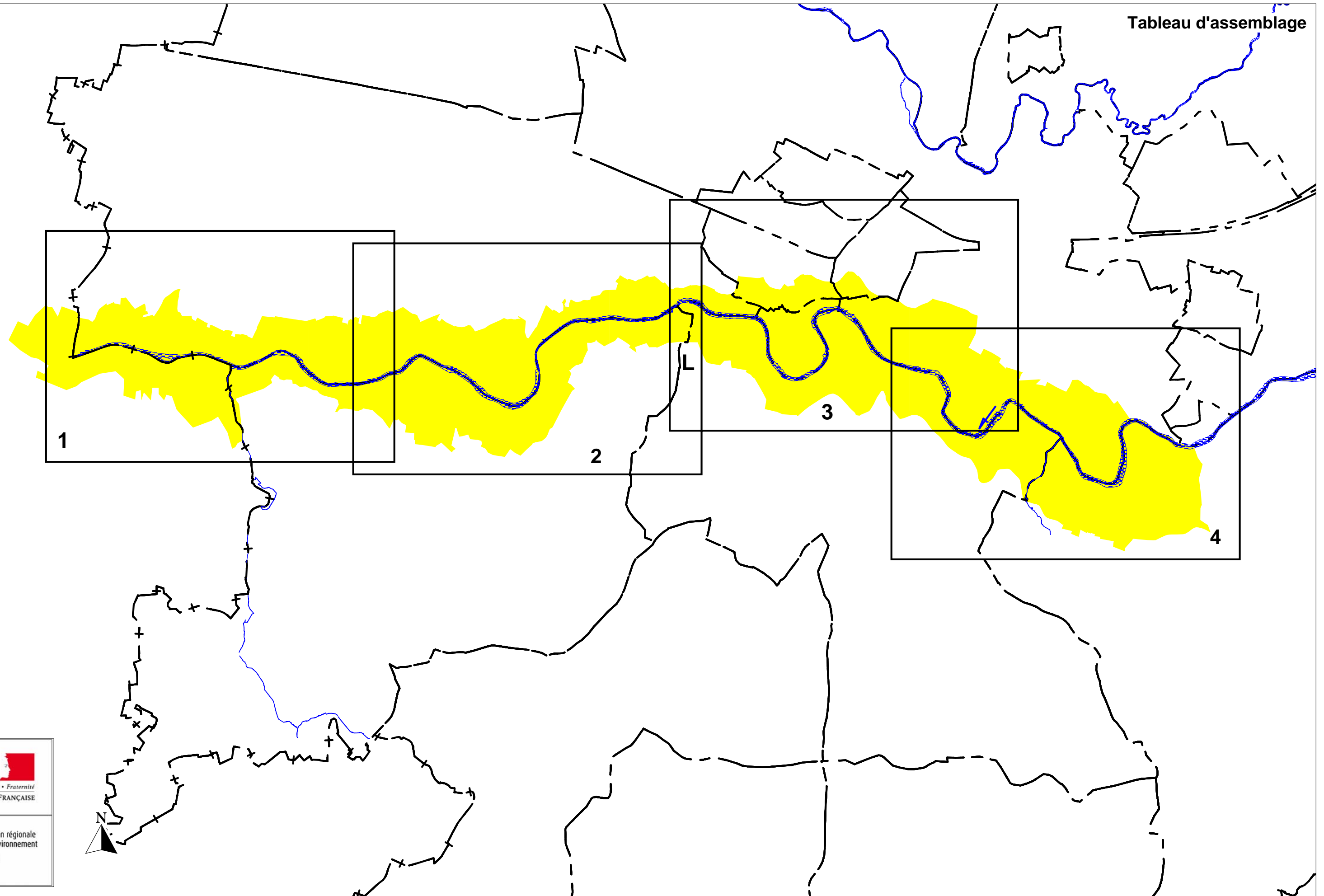
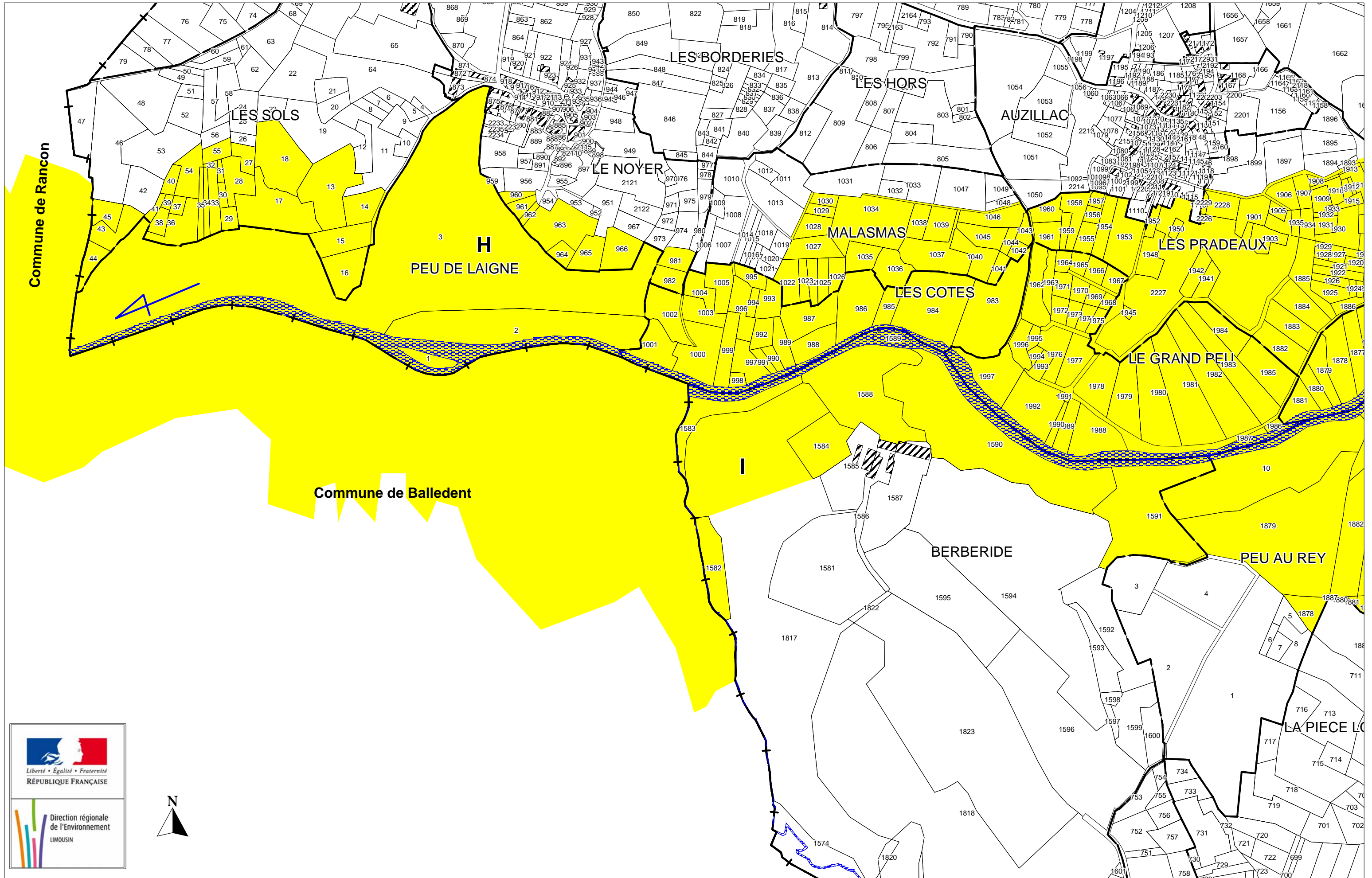
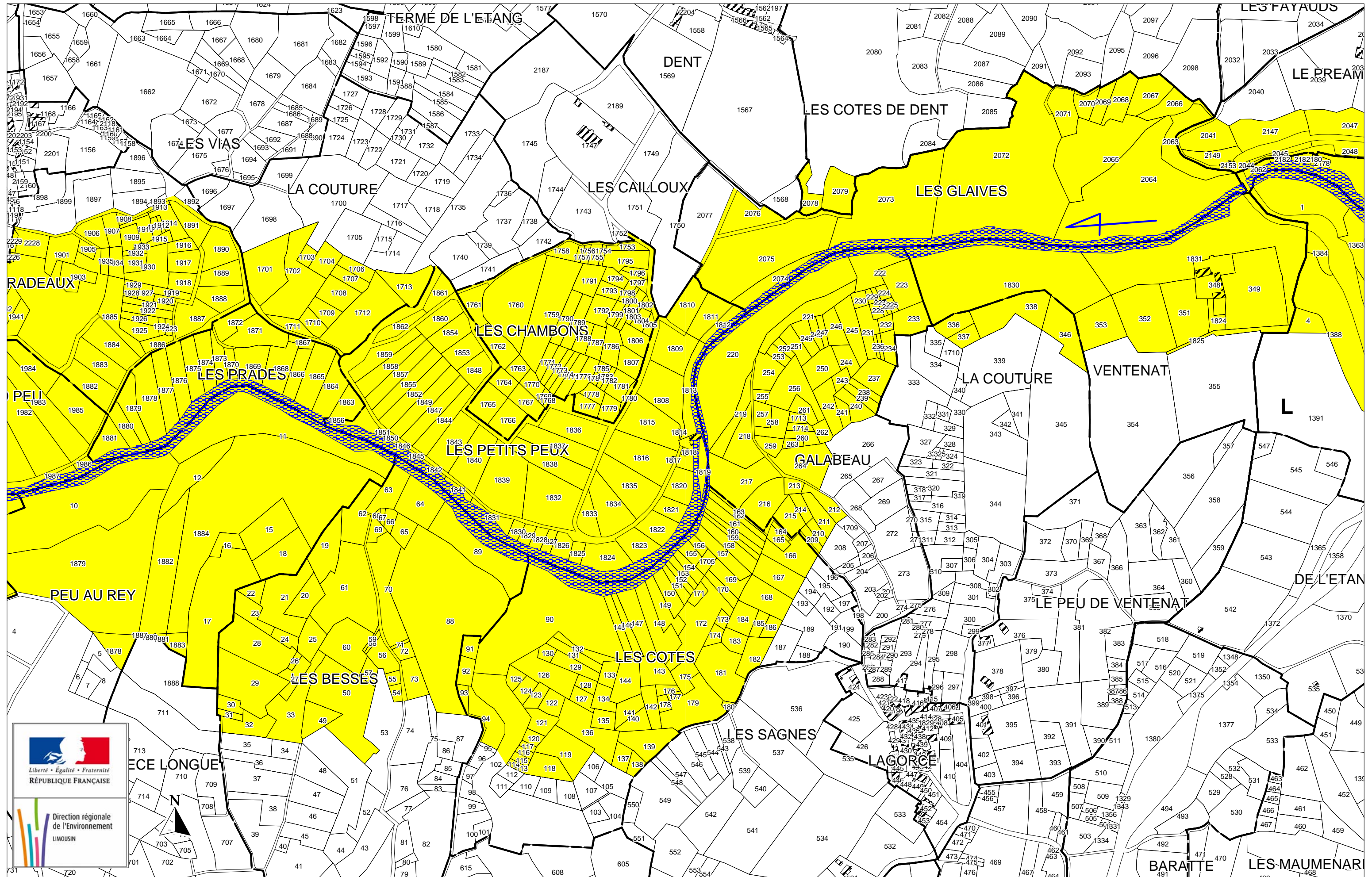


COMMUNE DE CHATEAUPONSAC - SITE INSCRIT DE LA VALLE DE LA GARTEMPE DU PONT DE GARTEMPE AUX PILIERS DE LASCOUX

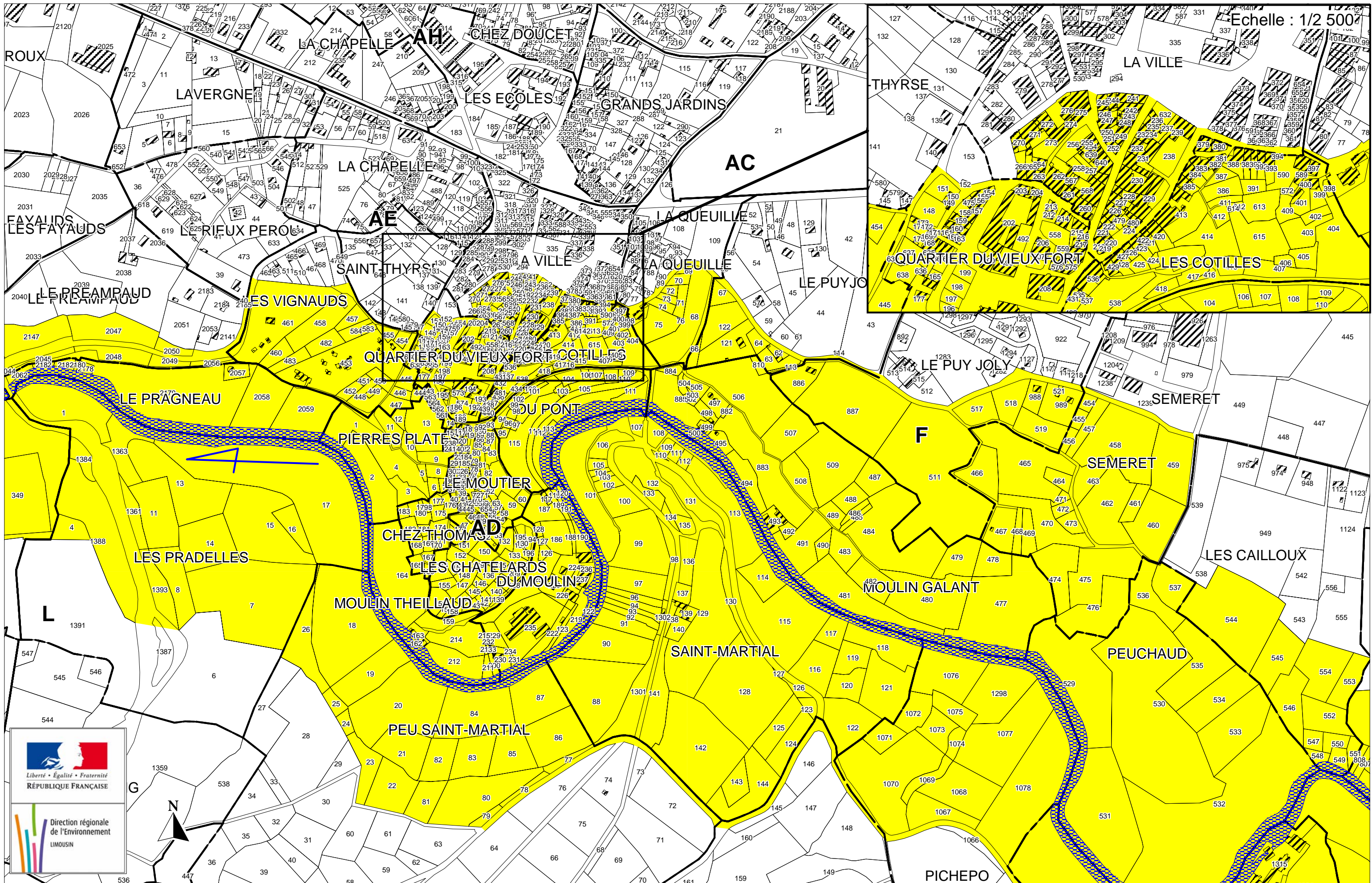
Tableau d'assemblage







Echelle : 1/2 500



Source et cartographie : DIREN LIMOUSIN - Novembre 2009
Fonds cadastraux : Direction des Services Fiscaux

Echelle : 1/5 000

