

**Communes de Saint Louis de Montferand  
Ambarès et Lagrave et Bassens**

**Plan de Prévention des Risques  
Technologiques (PPRT)**

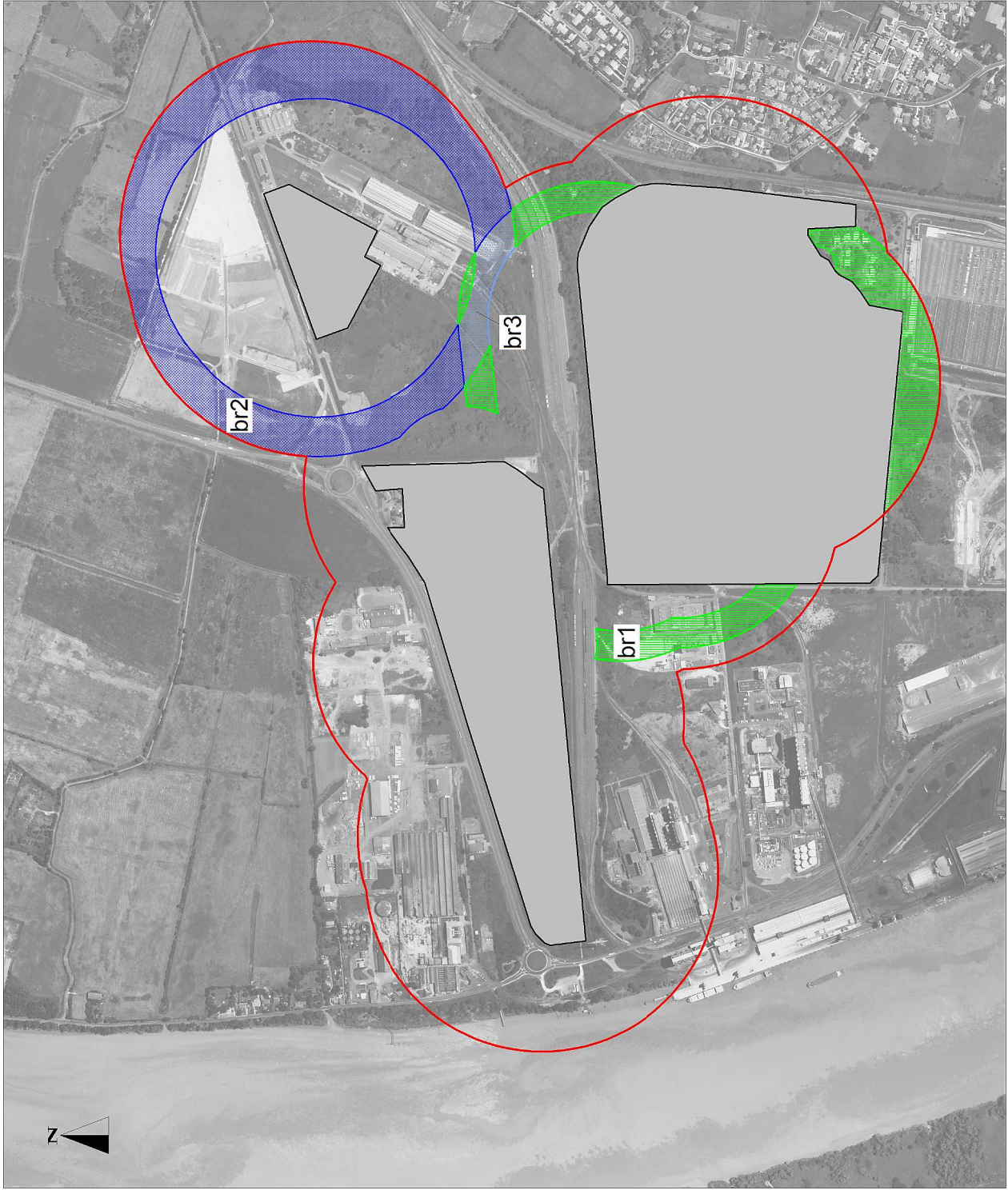
des établissements DPA, FORESA France et  
SIMOREP & Cie - SCS MICHELIN

**Plan de zonage réglementaire  
de recommandation**



**Pièce 5**

Approuvé le




Echelle : 1/5.000



**Éléments de Repérage**

-  Périmètre d'entreprise
-  Périmètre d'exposition  
aux risques

**Zonage**

-  br1
-  br2
-  br3