

## Distribution of the European and American Mink in France

Y. Bressan<sup>1</sup>, M. Fayet<sup>1</sup>, C. Bellanger<sup>1</sup>, E. Charbonnier<sup>1</sup>, R. Penalva<sup>1</sup>,  
T. Ruys<sup>2</sup>, C. Fournier-Chambrillon<sup>3</sup>, M. Dupuy<sup>3</sup>, E. Isère-Laoué<sup>3</sup>, P.  
Fournier<sup>3</sup>

<sup>1</sup> French Biodiversity Agency (OFB) / NAP  
<sup>2</sup> Groupe de Recherche et d'Investigation sur la Faune Sauvage (GRIFS) / NAP  
<sup>3</sup> Groupe de Recherche et d'Étude pour la Gestion de l'Environnement (GREGE) / LIFE VISON



### Monitoring mink's populations: a basis for conservation actions

The 3<sup>rd</sup> National Action Plan (NAP) for the European Mink conservation in France 2021-2031 set two high priorities: define and lead a translocation strategy and fight against the spread of the American Mink.

Both need a good knowledge of species' distributions and their development, acquired through the involvement of a large partners network.



#### European Mink *Mustela lutreola*

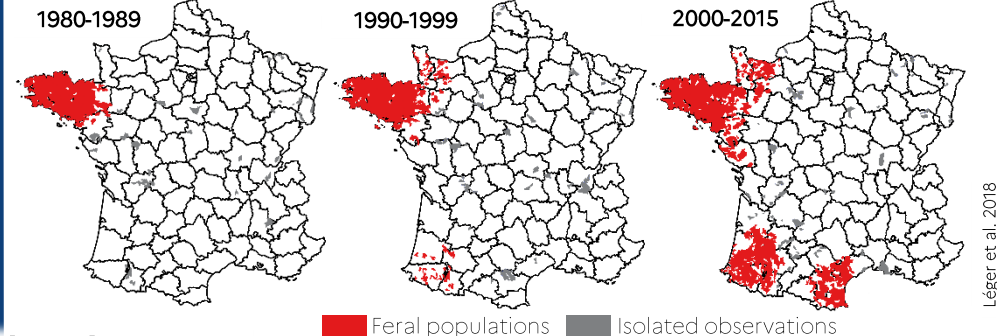
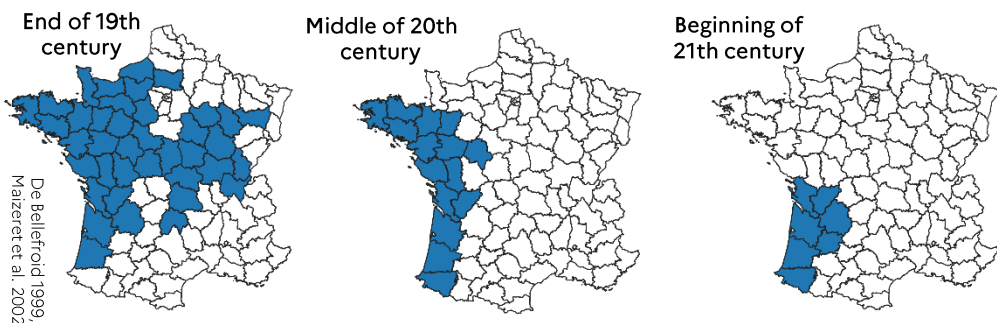
#### American Mink *Mustela vison*



#### Context

Drastic decline during the XX<sup>th</sup> century from 38 departments occupied to less than 11 now

Continuous expansion since the 1960's, 3 main populations surrounding European mink



#### Method

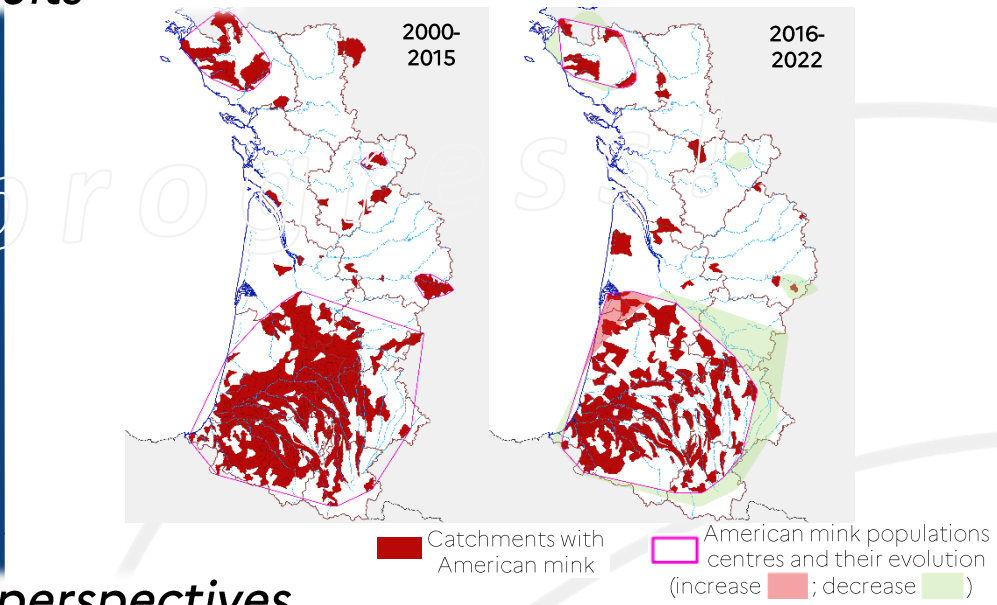
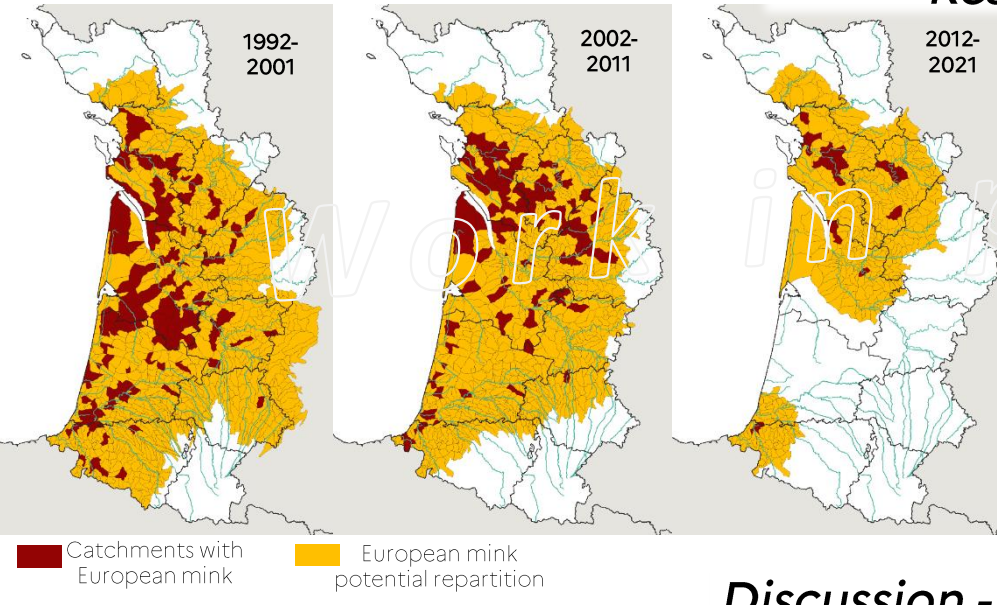
Available data: ongoing monitoring programs (trapping campaigns, hair and photo traps), road casualties, opportunistic observations - presence data 1992-2021

Available data: ongoing monitoring and control program (mink rafts deployed), trapping data, road casualties and opportunistic observations - presence data 2000-2022

Buffer around each data (35km – size under discussion), selection of intersected and surrounded catchments (scale under discussion): potential species repartition

Selection of catchments with presence data included in the NAP perimeter, population centres identified (MCP method – method and scale under discussion)

#### Results



### Discussion - perspectives

**American Mink presence all over European Mink repartition**

**European Mink still present in the South-western American Mink population centre!**

**Decrease of American Mink repartition on NAP perimeter: an efficient control program?**

Monitoring of Mink's populations still needed for:

- Taking the European Mink into consideration in development and territory management plans
- Identify the best areas for future European Mink translocations
- Assess and improve the American Mink control strategy

Acknowledgement:  
These results speak for the involvement of all the partners for European Mink conservation.

Photographic credits:  
S. Beillard, GREGE

Cartographic framework:  
BD Carto, BD Carthage, BD Topage

**Bibliography:**  
De Bellefroid M.N. (1999). Étude biogéographique de l'évolution de la population de Vison européen, *Mustela lutreola*, en France. Statut, répartition, écologie, facteurs de déclin et stratégie de conservation pour l'espèce. (Diplôme Doctoral de Recherche). Faculté des Sciences. Univ. Rennes 1. 93p.  
DREAL Nouvelle-Aquitaine, GRIFS, Cistude Nature, OFB (2021). Plan National d'Actions en faveur du Vison d'Europe (*Mustela lutreola*) 2021-2031. 174p.  
Léger F., Steinmetz J., Laoué E., Maillard J.F., Ruetta S. (2018). L'expansion du vison d'Amérique en France. Période 2000-2015. Faune Sauvage, 318, 23-31.  
LPO, GREGE, Conseil Départemental de la Charente-Maritime (2017). LIFE Nature and Biodiversity – LIFE 16 NAT/FR/000872 – LIFE MAMMAQ: Conservation du Vison d'Europe et des espèces d'intérêt communautaire associées du bassin versant du fleuve Charente. 299p.  
Maizeret C., Migot P., Rosoux R., Chusseau J.P., Gatelier T., Maurin H., Fournier-Chambrillon C. (2002). The distribution of the European min (*Mustela lutreola*) in France: towards a short term extinction? Mammalia, 66(4), 525-532.